



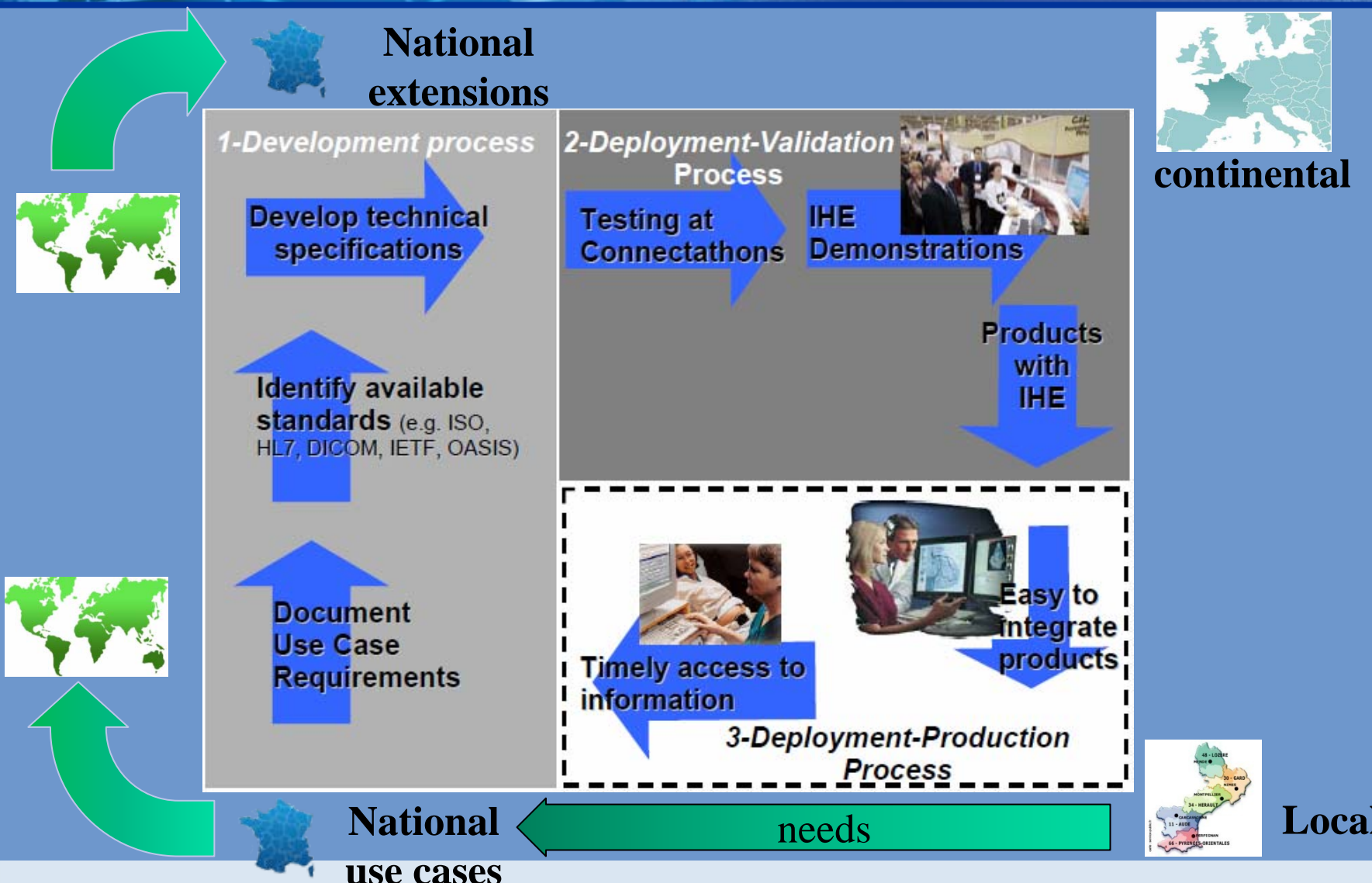
**IHE news from some
(international) domains
and from one country**

François Macary - GIP DMP



IHE process: From local to international, back and forth

international



IHE France



- France started together with Europe in 2001
- Sponsors:
 - Public institutions: GMSIH
 - Professional societies: SFR



- Organized the two first European connectathons in Paris: 2001 & 2002



- Strongly contributed to ITI domain (XDS, XDM, PIX, PAM, SVS) and to RAD domain (REM)



- Built new domains together with some other countries
 - Laboratory (with Japan, Italy, the Netherland, ...)
 - Anatomic Pathology (with Spain, Portugal, Italy, Germany, Japan...)

IHE France

- Not a formal organization until 2009
- Is about to integrate a non-profit organization, which is the HL7 France affiliate
- Name will likely be « InteropSanté »
- A common governance for IHE activity and HL7 activity
- > 100 organizational members

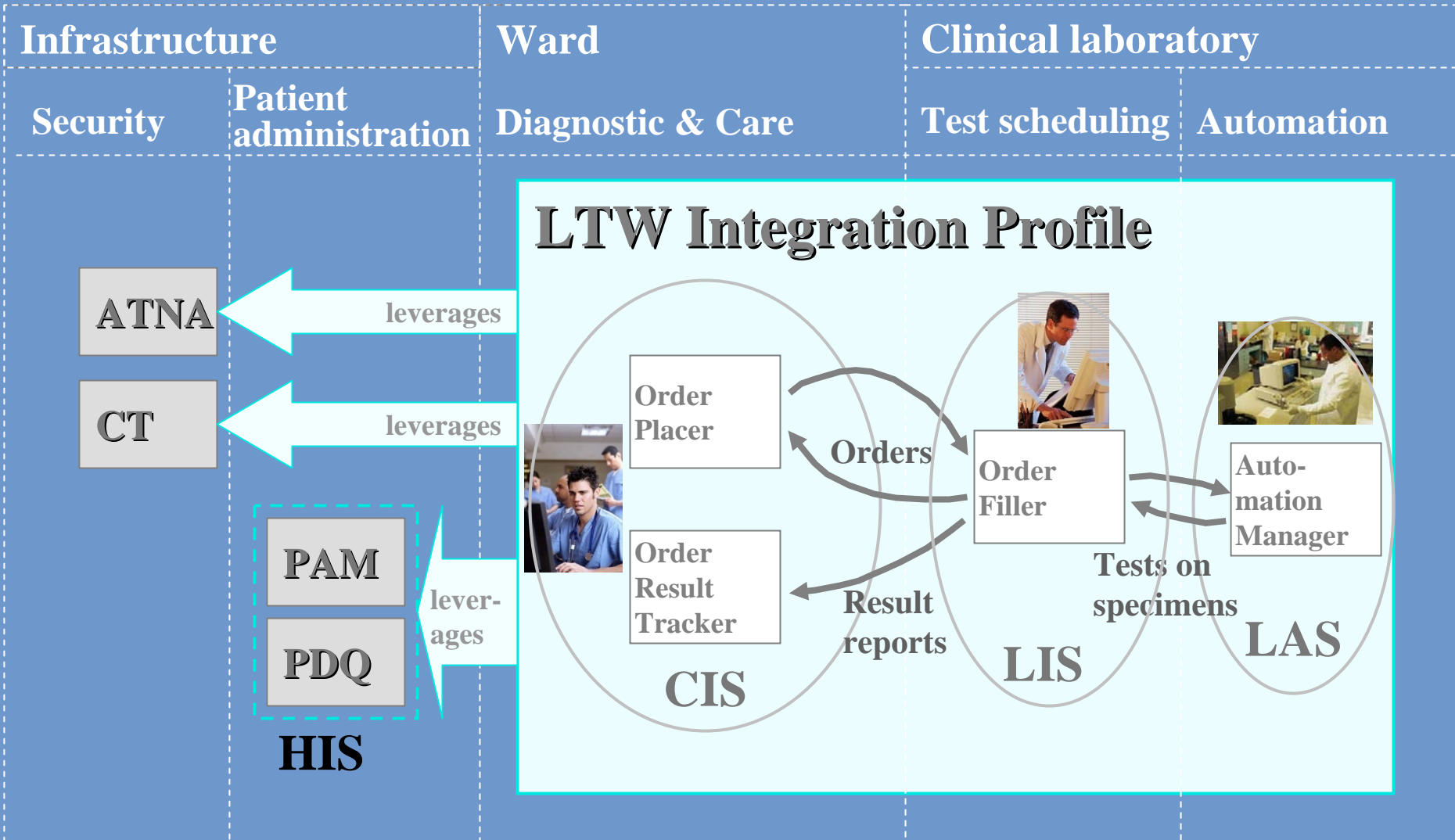


IHE Laboratory

- Domain created in 2003
- Since then, 6 profiles built:
 - Laboratory Testing Workflow (LTW), intra-hospital (*)
 - Laboratory Device Automation (LDA)
 - Laboratory Point of Care Testing (LPOCT) (*)
 - Laboratory Barcode Labeling (LBL) (*)
 - Laboratory Code Set Distribution (LCSD) (*)
 - XD-LAB content: Lab report as a CDA document (*)

(*) Profile tested this week in Vienna

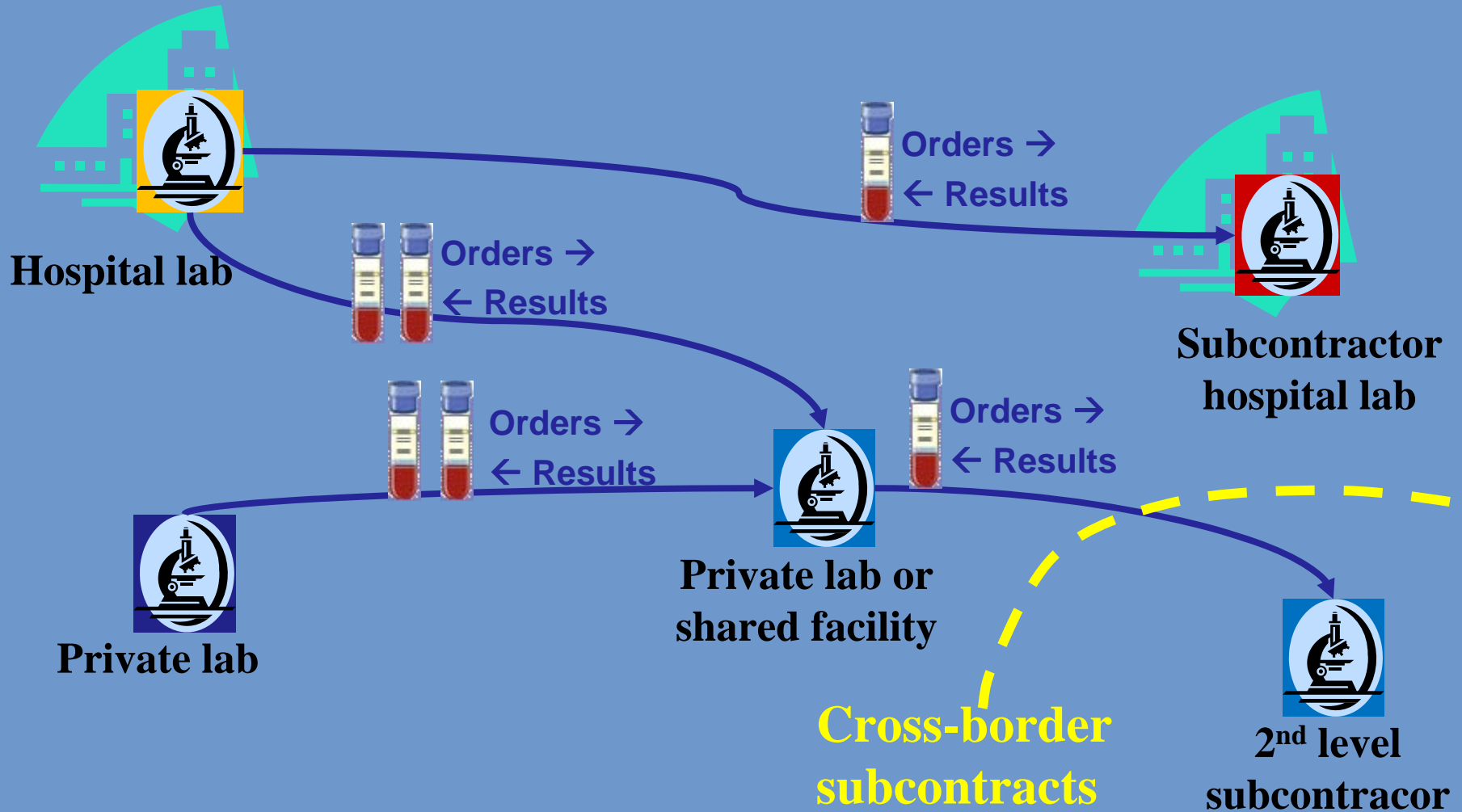
The intra-hospital profile: LTW



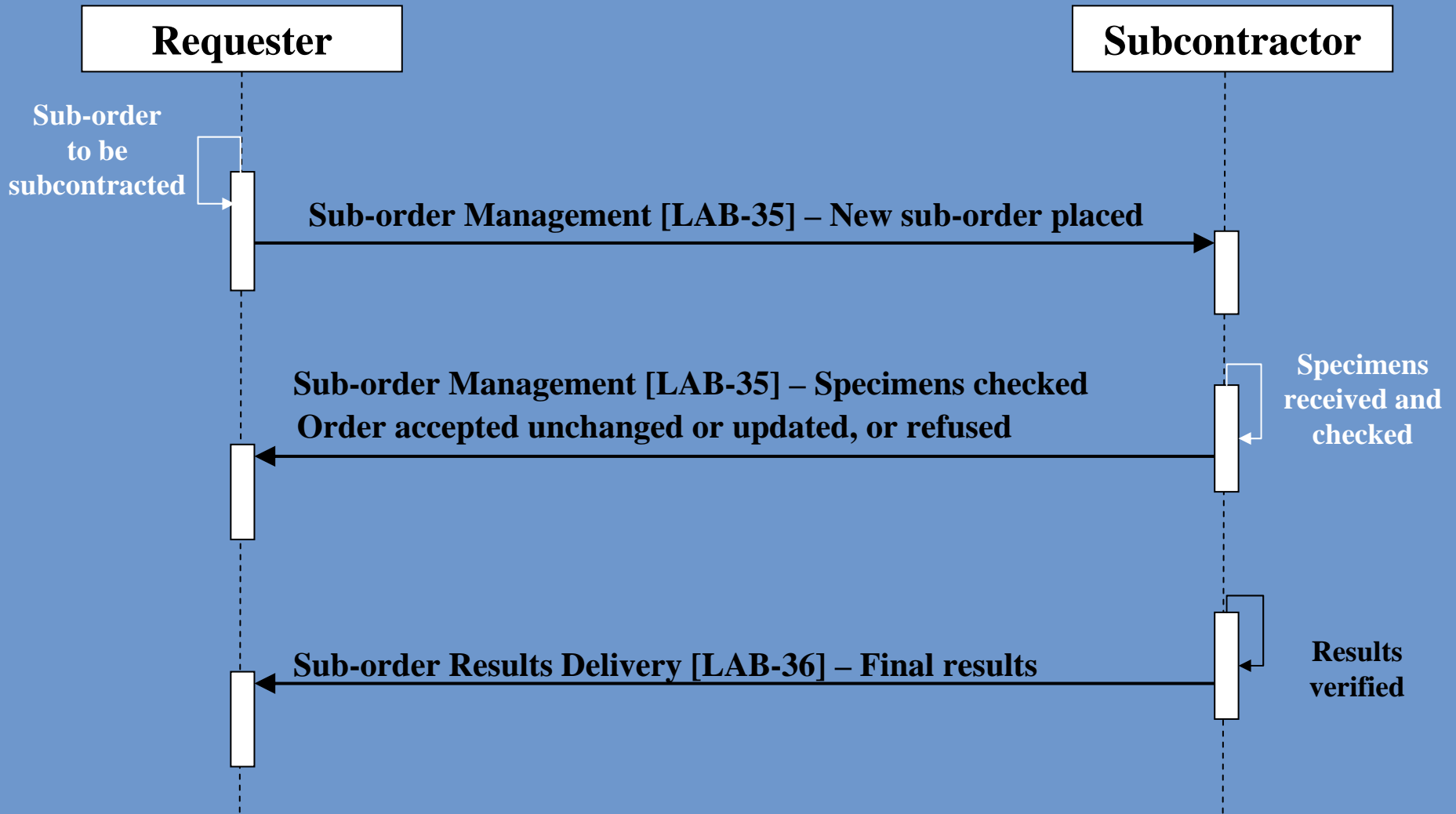
IHE Laboratory current activities

- **LOINC test code set in France (Jan. 2009)**
 - Constrained and translated by SFIL
 - 4 500 codes (instead of 30 000)
 - Available on www.sfil.assoc.fr
- **New inter-laboratory workflow profile (ILW)**
 - out for public comment on www.ihe.net until May 4.
- **Laboratory external ordering**
 - project brought by NL (see Andries Hamster's presentation)
- **Uploading simple images from devices**
 - project brought by Japan → New option on LTW & LDA profiles

inter-laboratory workflow (ILW)



ILW basic workflow

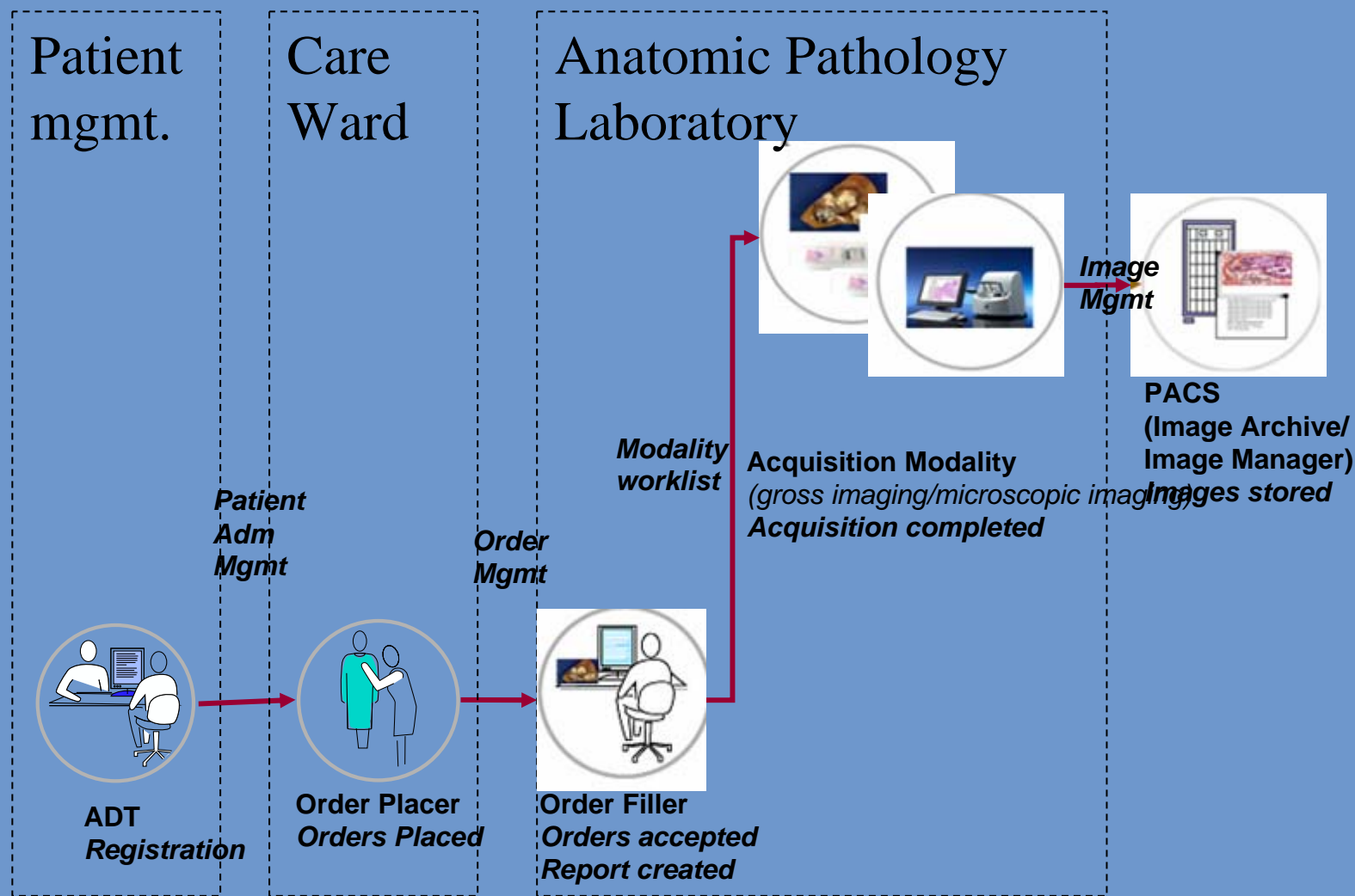




IHE Anatomic Pathology

- Domain created in 2006
- 1st profile published in Fall 2008:
 - Anatomic Pathology Workflow (APW)
 - Handles the intra-hospital workflow (orders, reports, and images)
 - Leverages HL7 2.5 and DICOM
- Many countries involved:
 - France, Spain, Germany, Italy, US (CAP & CDC), Canada, Japan, Portugal
- Tight cooperation with HL7 anatomic pathology WG

APW intra-hospital profile



IHE Anatomic Pathology current activities

- **New profile: Anatomic Pathology Reporting to Public Health (e.g. cancer registries)**
 - In cooperation with North-American Association of Cancer Central Registries (NAACCR)
 - Standard is HL7 2.5, ORU message.
 - Out for public comment next June
- **White paper on Structured reports**
 - Will be the base for CDA content modules



IHE Pharmacy

- **Year 2008:**
 - A European project and work group (see Geert Claeys' presentation)
- **1st quarter 2009:**
 - A new IHE international domain
 - A white paper setting the scope and investigating the use cases:
 - Community workflow
 - Intra-hospital workflow
 - Community-hospital workflows (admission, discharge, dispense for outpatients)
- **3rd quarter 2009: Building the first profiles**
 - Volunteers welcomed

Thank you



francois.macary@sante.gouv.fr

WWW.IHE.NET